

NOTE: ALL FASTENING MATERIALS SHALL BE STAINLESS STEEL OR GALVANIZED

INTERIOR FLOOR STRUCTURE

MASONRY VENEER AS SPECIFIED BY ARCHITECT, MAX. UNSUPPORTED HEIGHT OF 20' (6m) ABOVE SHELF ANGLE

CONTINUOUS METAL FLASHING WITH DRIP EDGE C/W SELF ADHERING FLASHING MEMBRANE WITH

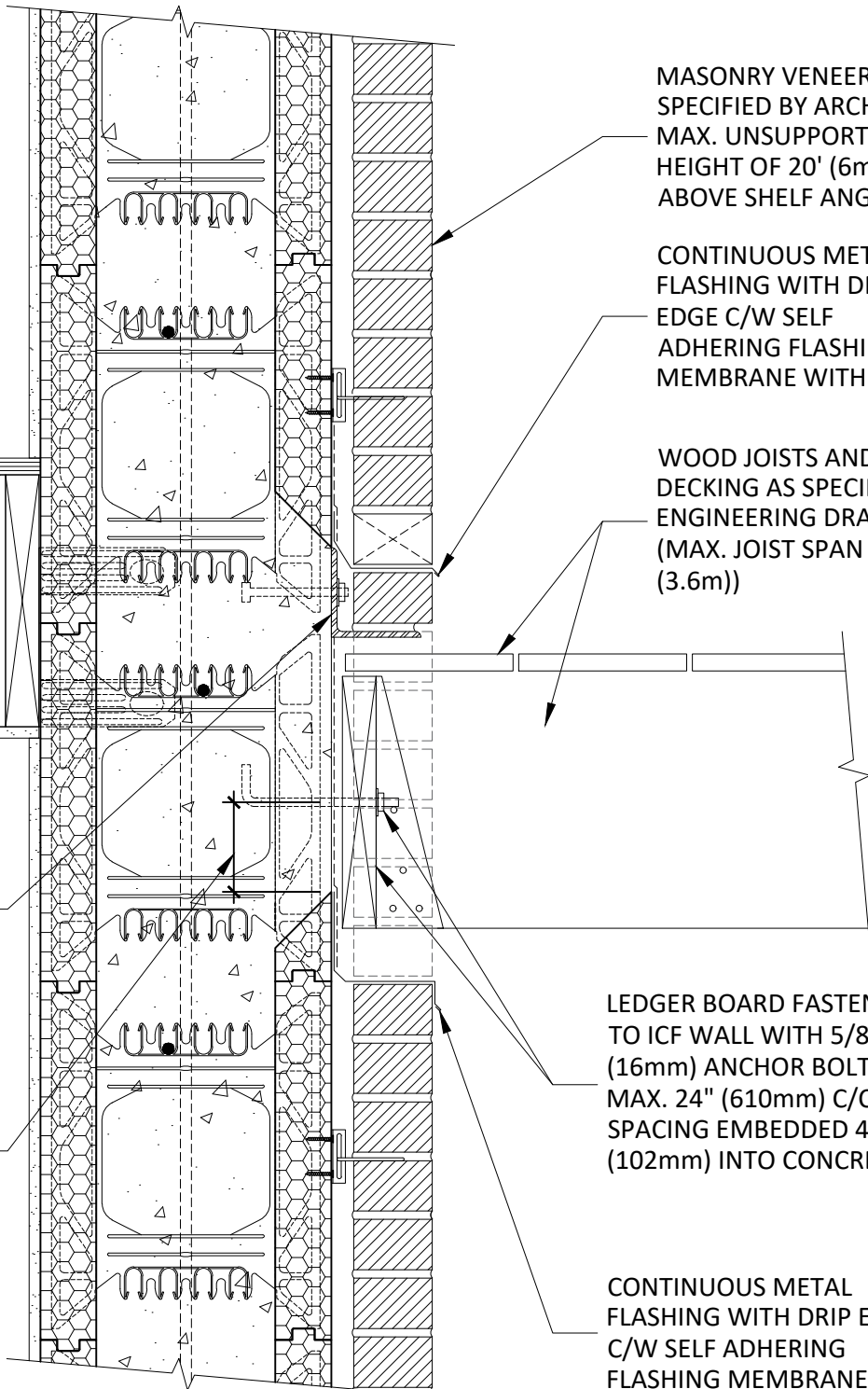
WOOD JOISTS AND DECKING AS SPECIFIED ON ENGINEERING DRAWINGS (MAX. JOIST SPAN 12' (3.6m))

1/4" (6.35mm) SHELF ANGLE, SIZED FOR MASONRY VENEER, FASTENED TO CONCRETE WITH 5/8" (16mm) ANCHOR RODS @ MAX. 32" (813mm) C/C SPACING

CONCRETE POCKET 4" (102mm) MIN. EDGE DISTANCE AROUND ANCHOR RODS

LEDGER BOARD FASTENED TO ICF WALL WITH 5/8" (16mm) ANCHOR BOLTS @ MAX. 24" (610mm) C/C SPACING EMBEDDED 4" (102mm) INTO CONCRETE

CONTINUOUS METAL FLASHING WITH DRIP EDGE C/W SELF ADHERING FLASHING MEMBRANE WITH



WOOD DECK ATTACHMENT TO NEW 8" R22 ICF WALL WITH MASONRY



7 October 2020

ALL DETAILS SHALL BE CONSTRUCTED IN ACCORDANCE WITH LOCAL BUILDING CODE AND CLIMATIC ZONE REQUIREMENTS. THE FOLLOWING INFORMATION IS PROVIDED AS A GUIDELINE ONLY AND CAN BE CHANGED WITHOUT NOTICE BY AMVIC.