

CAR GARAGE

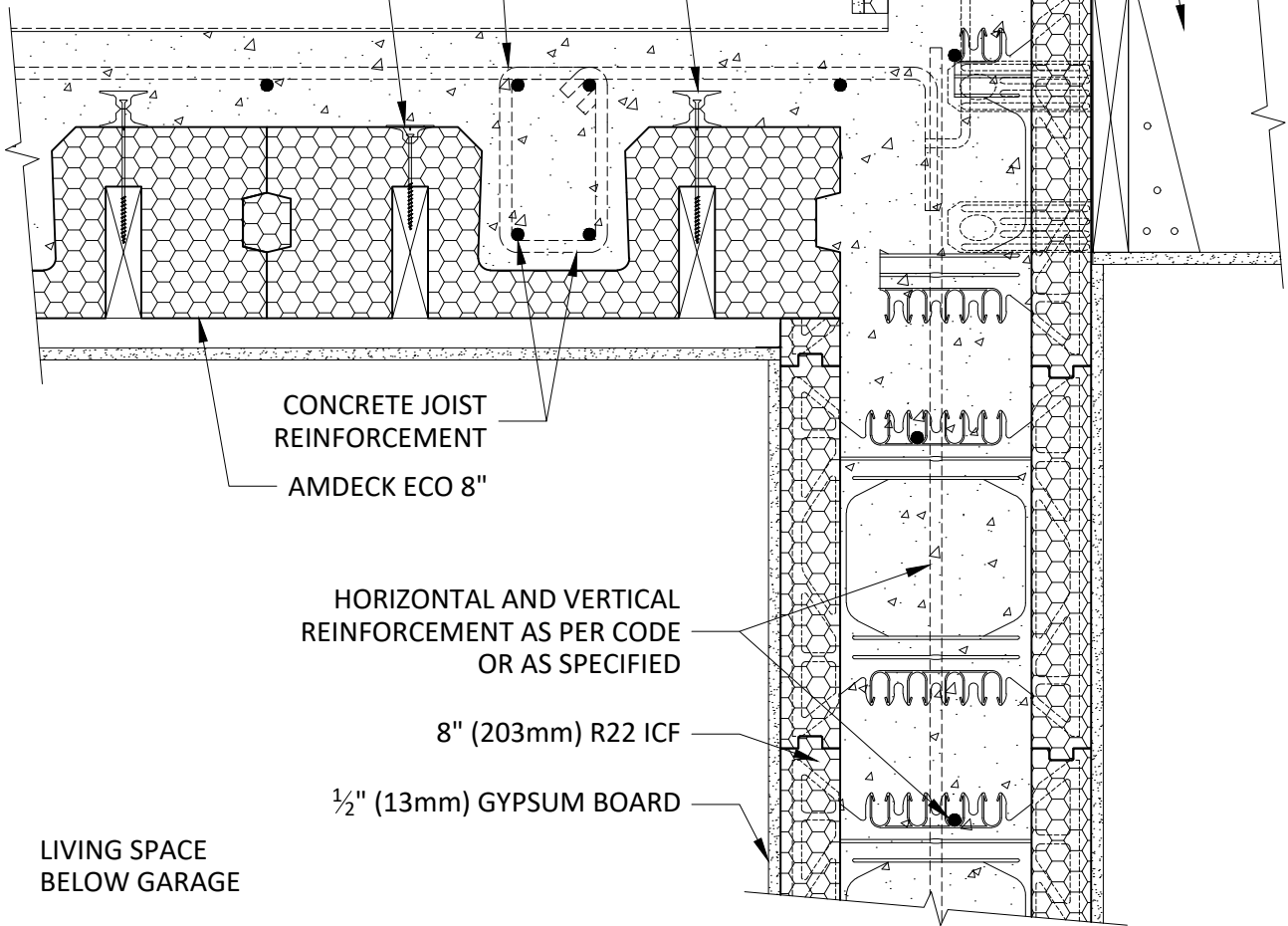
1/2" (13mm) GYPSUM BOARD
RIGID EPS INSULATION
WRB MEMBRANE
OSB SHEATHING
2x6 (38x140mm) WOOD FRAMING
MINERAL WOOL BATT INSULATION
VAPOR BARRIER
1/2" (13mm) GYPSUM BOARD

LONGER SCREW WITH
DOUBLE WASHER

CONCRETE SLAB
REINFORCEMENT AS PER
CODE OR AS SPECIFIED

SHORTER SCREW WITH
SINGLE WASHER

WOOD
FLOOR
SYSTEM



CONCRETE JOIST
REINFORCEMENT

AMDECK ECO 8"

HORIZONTAL AND VERTICAL
REINFORCEMENT AS PER CODE
OR AS SPECIFIED

8" (203mm) R22 ICF

1/2" (13mm) GYPSUM BOARD

LIVING SPACE
BELOW GARAGE

8" AMDECK ECO TO INTERIOR ICF WALL WITH TRANSVERSE SECTION



7 October 2020

ALL DETAILS SHALL BE CONSTRUCTED IN ACCORDANCE WITH LOCAL BUILDING CODE AND CLIMATIC ZONE REQUIREMENTS. THE FOLLOWING INFORMATION IS PROVIDED AS A GUIDELINE ONLY AND CAN BE CHANGED WITHOUT NOTICE BY AMVIC.