

CAR GARAGE

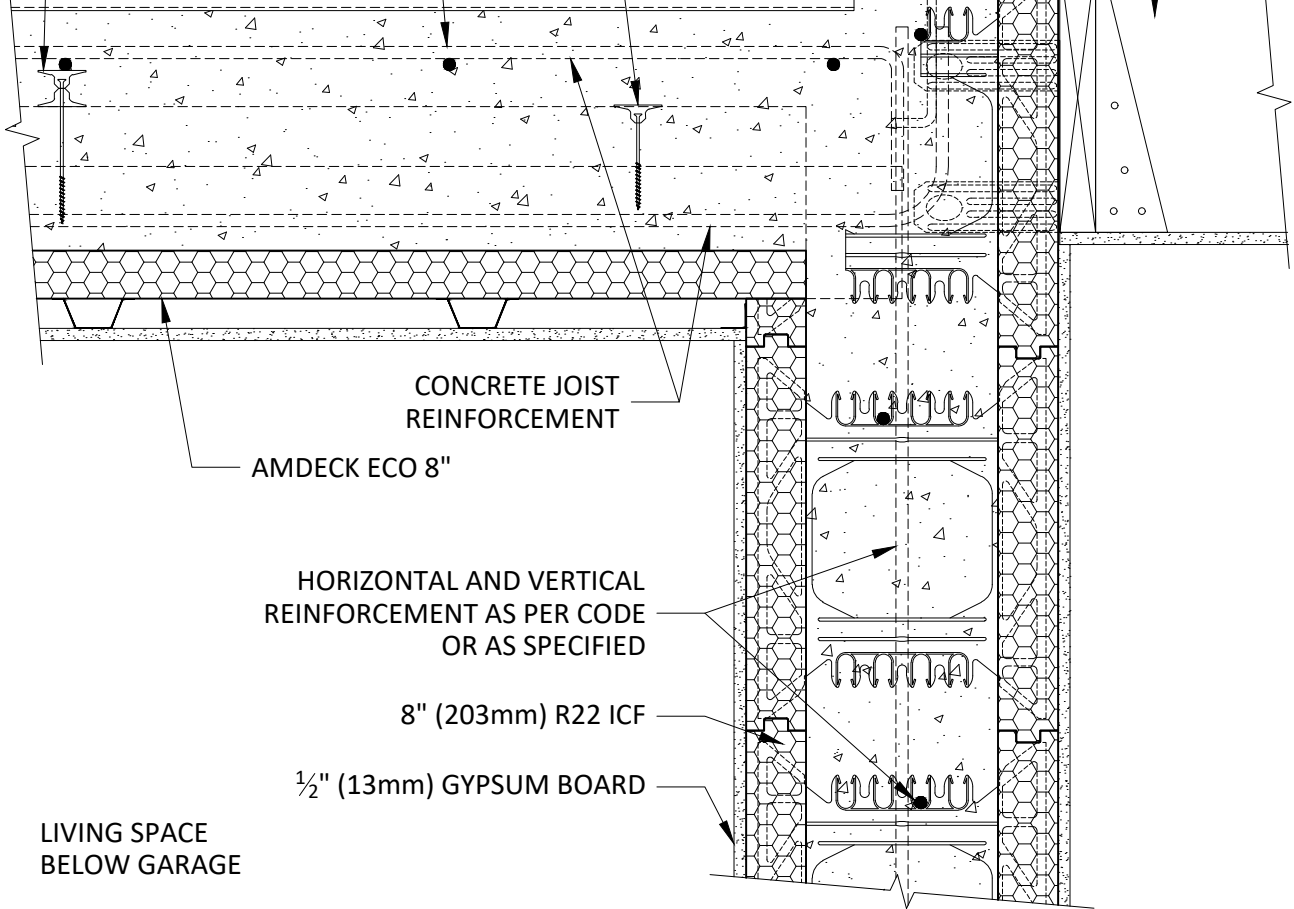
1/2" (13mm) GYPSUM BOARD
RIGID EPS INSULATION
WRB MEMBRANE
OSB SHEATHING
2x6 (38x140mm) WOOD FRAMING
MINERAL WOOL BATT INSULATION
VAPOR BARRIER
1/2" (13mm) GYPSUM BOARD

SHORTER SCREW WITH
SINGLE WASHER

CONCRETE SLAB
REINFORCEMENT AS PER
CODE OR AS SPECIFIED

LONGER SCREW WITH
DOUBLE WASHER

WOOD
FLOOR
SYSTEM



AMDECK ECO 8"

CONCRETE JOIST
REINFORCEMENT

HORIZONTAL AND VERTICAL
REINFORCEMENT AS PER CODE
OR AS SPECIFIED

8" (203mm) R22 ICF

1/2" (13mm) GYPSUM BOARD

LIVING SPACE
BELOW GARAGE

8" AMDECK ECO TO INTERIOR ICF WALL LONGITUDINAL SECTION



1(877) 470-9991 amvicsystem.com

7 October 2020

ALL DETAILS SHALL BE CONSTRUCTED IN ACCORDANCE WITH LOCAL BUILDING CODE AND CLIMATIC ZONE REQUIREMENTS. THE FOLLOWING INFORMATION IS PROVIDED AS A GUIDELINE ONLY AND CAN BE CHANGED WITHOUT NOTICE BY AMVIC.