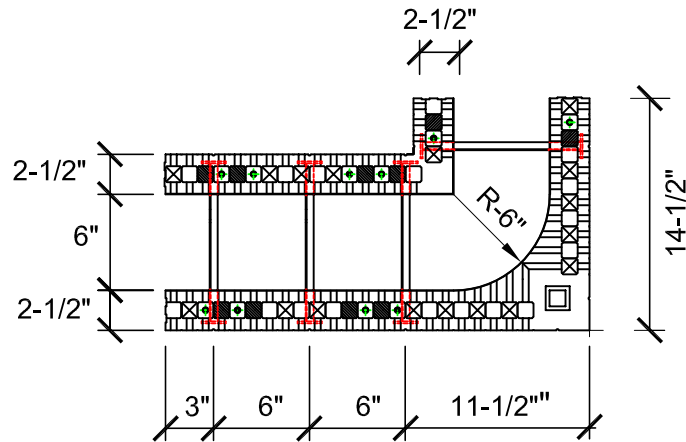
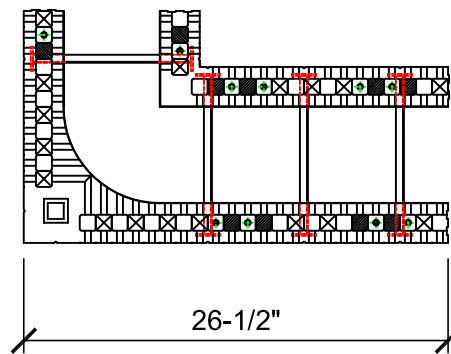


NOTE: BAR PLACEMENT
 CANADA REFER TO CCMC # 13043-R
 U.S. REFER TO ICC-ESR-1269

OR LOCAL BUILDING CODE
 OR PROFESSIONAL ENGINEER
 REQUIREMENTS



REVERSIBLE 90° SHORT CORNER
BLOCK LEFT ORIENTED



REVERSIBLE 90° SHORT CORNER
BLOCK RIGHT ORIENTED



Website: www.amvicsystem.com

AMVIC INC.
 501 McNicoll Avenue
 Toronto, ON M2H 2E2
 Canada
 Toll Free: 877-470-9991
 Fax: 416-759-7402

AMVIC 6" STANDARD
 90° CORNER SHORT

Drawing Scale:	1" = 1'- 0"
Creation Date:	December 2016
Item Number:	
Drawing ID Number:	

ALL DETAILS SHALL BE CONSTRUCTED IN ACCORDANCE WITH LOCAL BUILDING CODES AND PRACTICES. AMVIC INC. RESERVES THE RIGHT TO CHANGE INFORMATION SHOWN WITHOUT NOTICE.