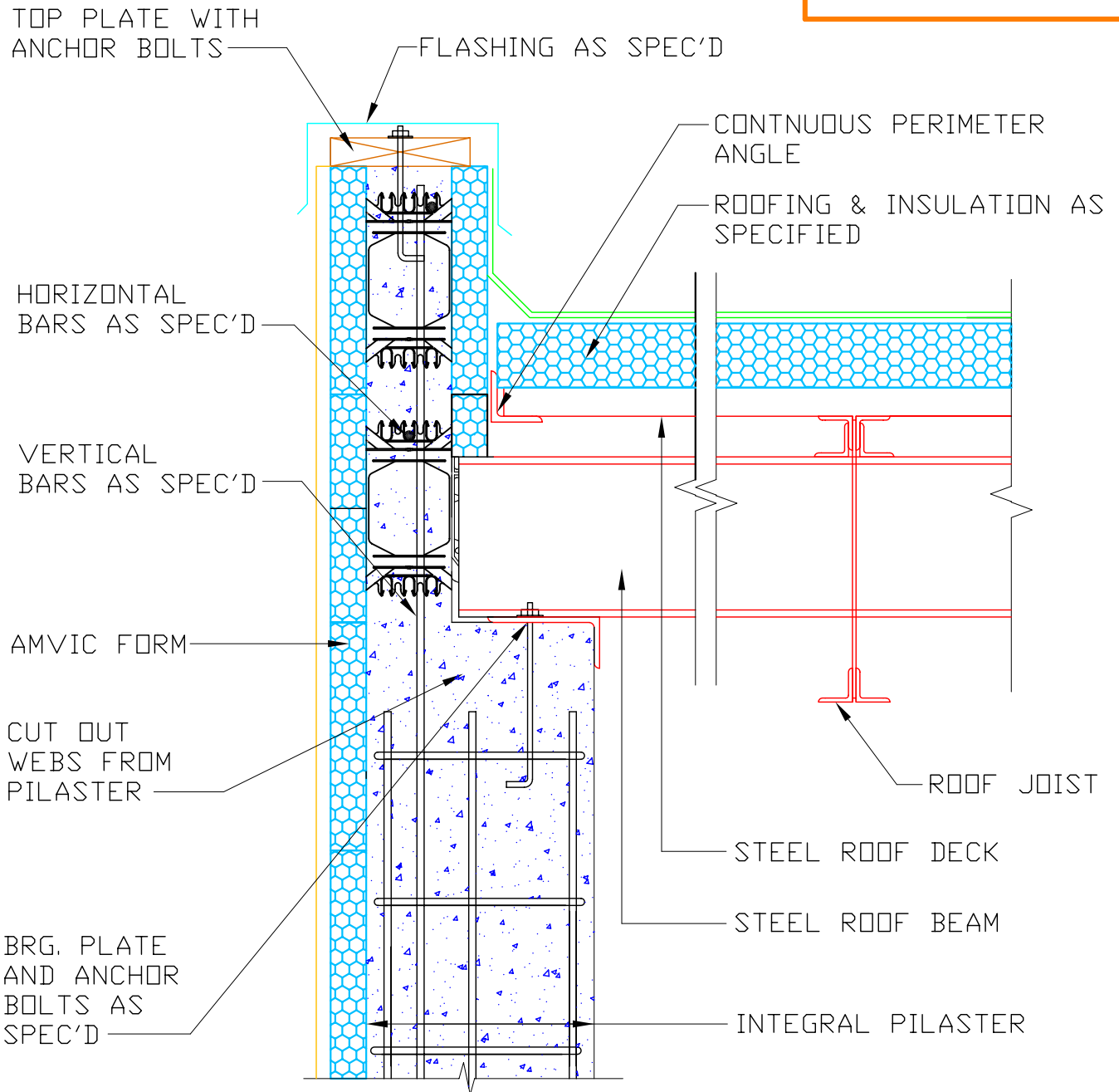


NOTE: BAR PLACEMENT
 CANADA REFER TO CCMC # 13043-R
 U.S. REFER TO ICC-ESR-1269

OR LOCAL BUILDING CODE
 OR PROFESSIONAL ENGINEER
 REQUIREMENTS



Website: www.amvicsystem.com

AMVIC INC.
 501 McNicoll Avenue
 Toronto, ON M2H 2E2
 Canada
 Toll Free: 877-470-9991
 Fax: 416-759-7402

ROOF BEAM BEARING ON INTEGRAL PILASTER

| | |
|--------------------|------------|
| Drawing Scale: | 1" = 1'-0" |
| Creation Date: | JULY, 2004 |
| Revision: | — |
| Drawing ID Number: | AMV-ROF-06 |

ALL DETAILS SHALL BE CONSTRUCTED IN ACCORDANCE WITH LOCAL BUILDING CODES AND PRACTICES. AMVIC INC. RESERVES THE RIGHT TO CHANGE INFORMATION SHOWN WITHOUT NOTICE.