

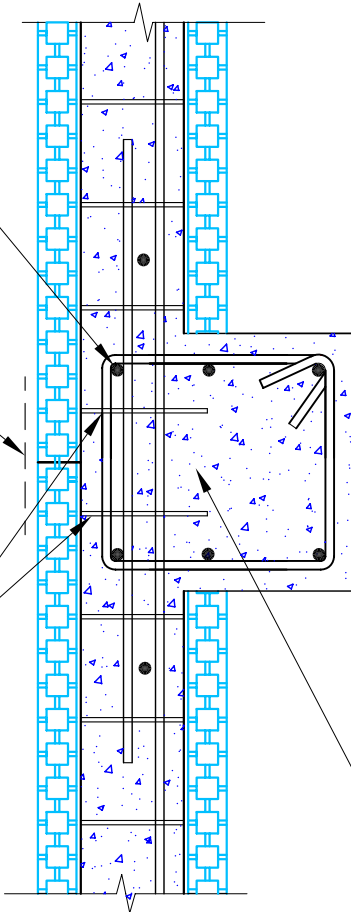
NOTE: BAR PLACEMENT
 CANADA REFER TO CCMC # 13043-R
 U.S. REFER TO ICC-ESR-1269

OR LOCAL BUILDING CODE
 OR PROFESSIONAL ENGINEER
 REQUIREMENTS

INSTALL DOWELS
 THROUGH PILASTER
 AFTER PLACING
 PILASTER
 REINFORCING

BRACE DURING
 CONCRETE POUR

REMOVE WEBS AS
 REQUIRED TO FORM
 PILASTER



INTEGRAL PILASTER
 DIMENSIONS AND
 REINFORCING AS
 SPECIFIED

REMOVE PORTION OF
 FORMS AS REQUIRED
 TO SUIT PILASTER



Website: www.amvicsystem.com

AMVIC INC.
 501 McNicoll Avenue
 Toronto, ON M2H 2E2
 Canada
 Toll Free: 877-470-9991
 Fax: 416-759-7402

TYPICAL PILASTER

Drawing Scale:	1" = 1'-0"
Creation Date:	JULY, 2004
Revision:	—
Drawing ID Number:	AMV-CON-005

ALL DETAILS SHALL BE CONSTRUCTED IN ACCORDANCE WITH LOCAL BUILDING CODES AND PRACTICES. AMVIC INC. RESERVES THE RIGHT TO CHANGE INFORMATION SHOWN WITHOUT NOTICE.