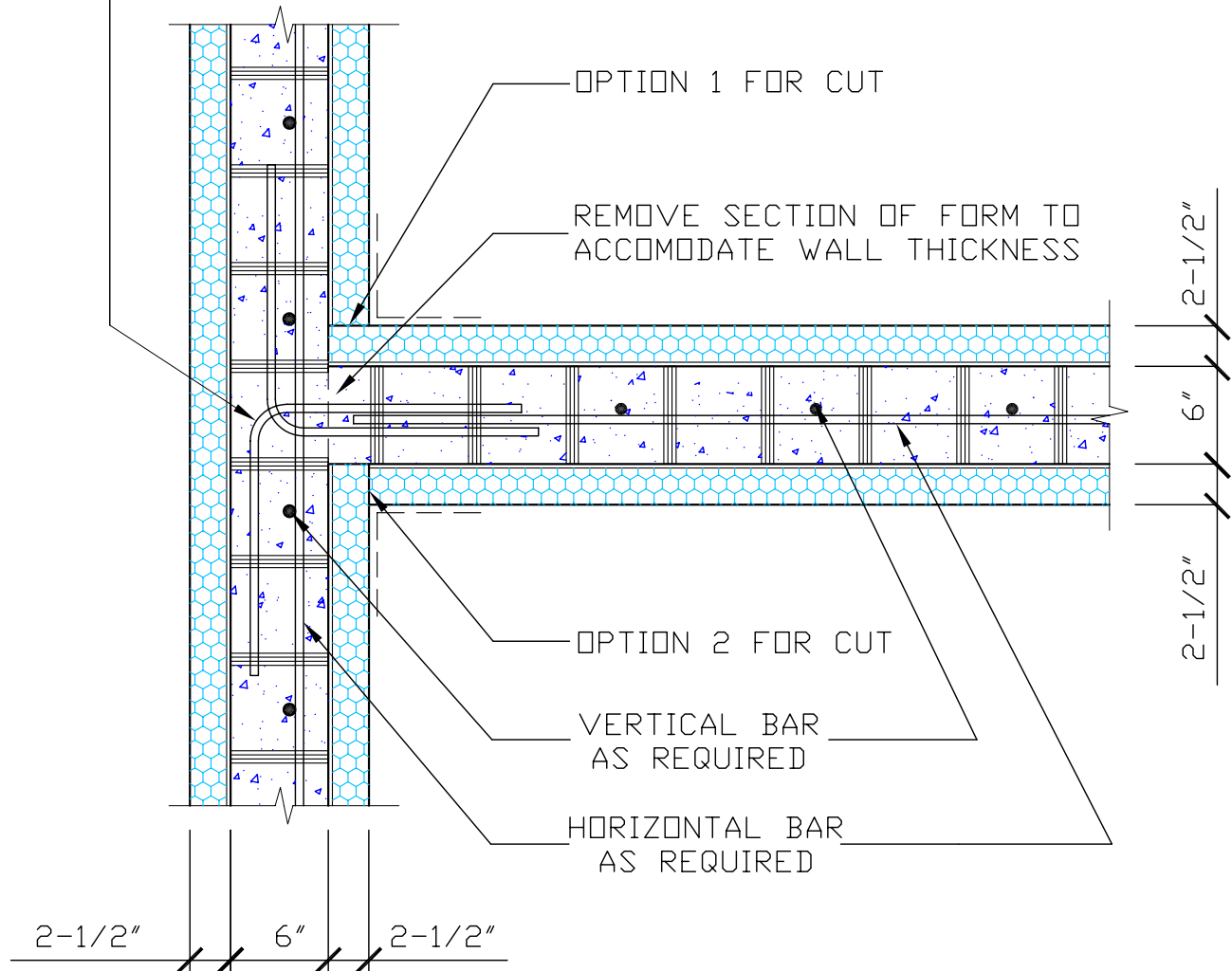


NOTE: BAR PLACEMENT
 CANADA REFER TO CCMC # 13043-R
 U.S. REFER TO ICC-ESR-1269

OR LOCAL BUILDING CODE
 OR PROFESSIONAL ENGINEER
 REQUIREMENTS

90 DEGREE CORNER BAR,
 LAP BARS 40 BAR
 DIAMETERS, MINIMUM.
 ALTERNATE ON EACH SIDE
 OF "T" WALL.



Website: www.amvicsystem.com

AMVIC INC.
 501 McNicoll Avenue
 Toronto, ON M2H 2E2
 Canada
 Toll Free: 877-470-9991
 Fax: 416-759-7402

AMVIC "T" WALL CONNECTION

Drawing Scale:	1" = 1'-0"
Creation Date:	JULY, 2004
Revision:	-
Drawing ID Number:	AMV-CON-002

ALL DETAILS SHALL BE CONSTRUCTED IN ACCORDANCE WITH LOCAL BUILDING CODES AND PRACTICES. AMVIC INC. RESERVES THE RIGHT TO CHANGE INFORMATION SHOWN WITHOUT NOTICE.