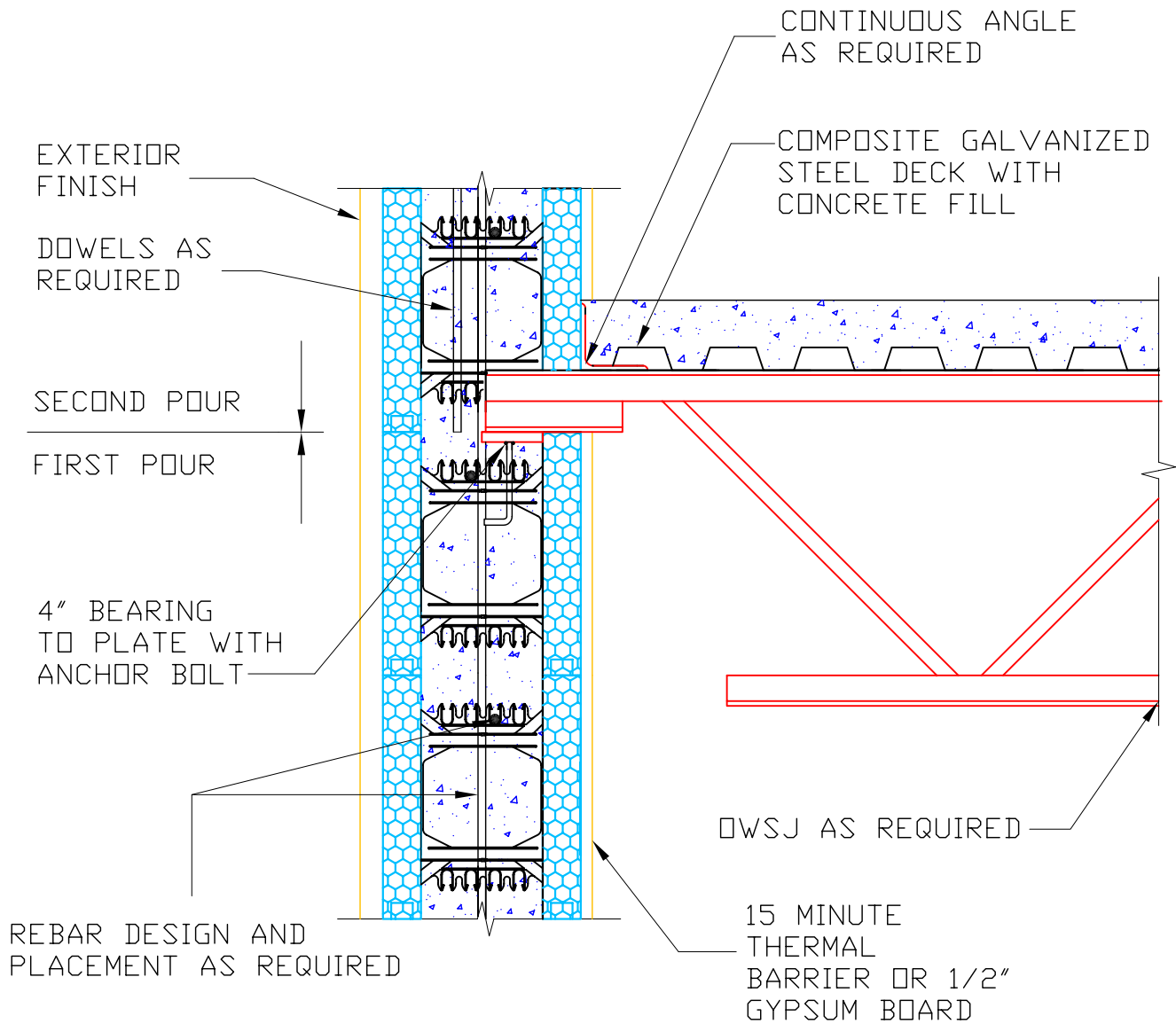


NOTE: BAR PLACEMENT
 CANADA REFER TO CCMC # 13043-R
 U.S. REFER TO ICC-ESR-1269

OR LOCAL BUILDING CODE
 OR PROFESSIONAL ENGINEER
 REQUIREMENTS



 **amvic**
 building system

Website: www.amvicsystem.com

AMVIC INC.
 501 McNicoll Avenue
 Toronto, ON M2H 2E2
 Canada
 Toll Free: 877-470-9991
 Fax: 416-759-7402

COMPOSITE DECK/SLAB OWSJ
 PERPENDICULAR TO WALL

Drawing Scale:	1" = 1'-0"
Creation Date:	JULY, 2004
Revision:	—
Drawing ID Number:	AMV-FLR-008

ALL DETAILS SHALL BE CONSTRUCTED IN ACCORDANCE WITH LOCAL BUILDING
 CODES AND PRACTICES. AMVIC INC. RESERVES THE RIGHT TO CHANGE
 INFORMATION SHOWN WITHOUT NOTICE.