

5/8" DRYWALL

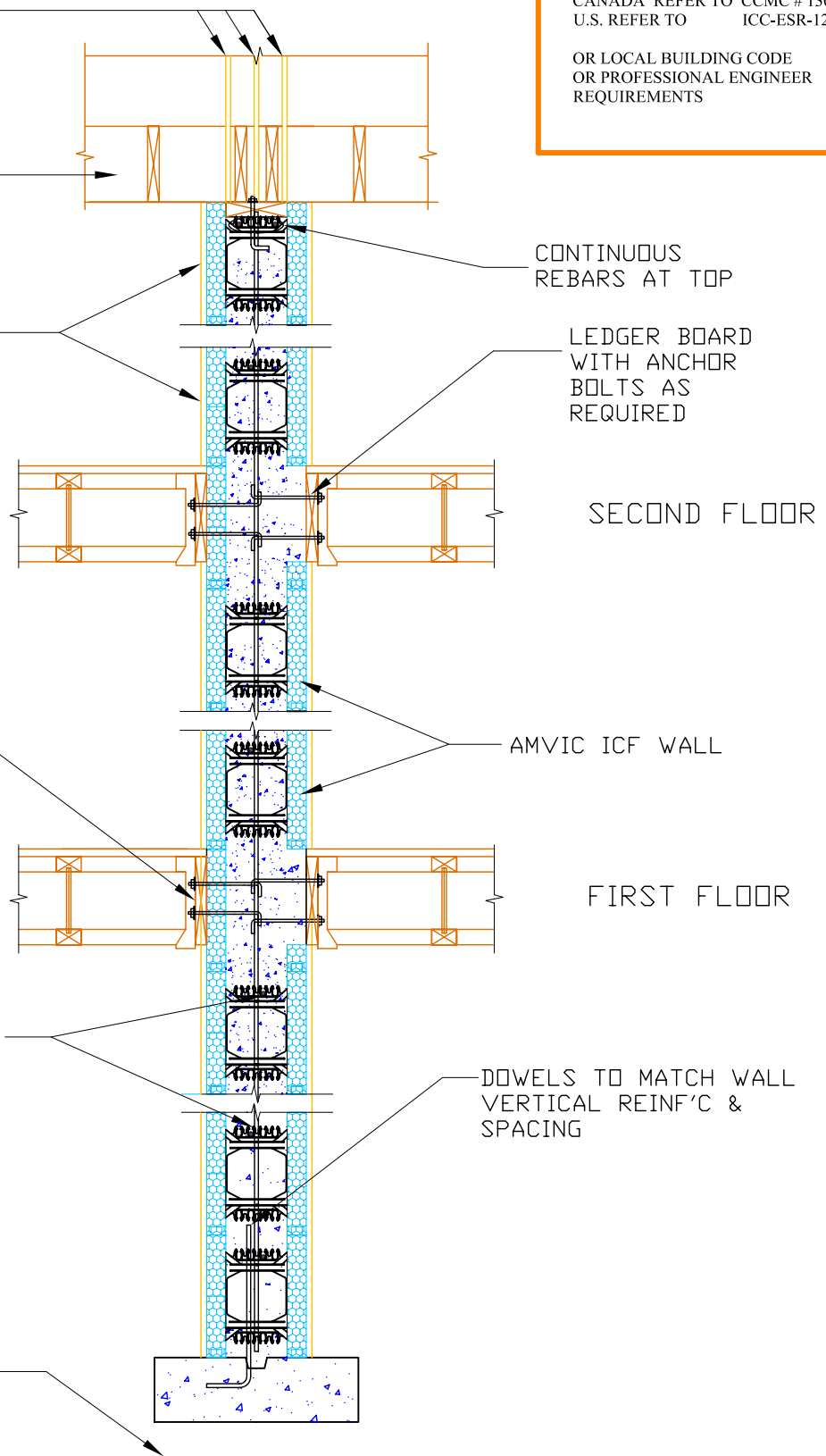
ROOF SYSTEM

15 MINUTE
THERMAL BARRIER
ON BOTH SIDES
OF WALL

LEDGER BOARD
WITH ANCHOR
BOLTS AS
REQUIRED

VERTICAL +
HORIZONTAL REBARS
AS REQUIRED

POUR FOOTING
AGAINST
UNDISTURBED SOIL



NOTE: BAR PLACEMENT
CANADA REFER TO CCMC # 13043-R
U.S. REFER TO ICC-ESR-1269

OR LOCAL BUILDING CODE
OR PROFESSIONAL ENGINEER
REQUIREMENTS

CONTINUOUS
REBARS AT TOP

LEDGER BOARD
WITH ANCHOR
BOLTS AS
REQUIRED

SECOND FLOOR

AMVIC ICF WALL

FIRST FLOOR

DOWELS TO MATCH WALL
VERTICAL REINF'C &
SPACING



Website: www.amvicsystem.com

AMVIC INC.
501 McNicoll Avenue
Toronto, ON M2H 2E2
Canada

Toll Free: 877-470-9991
Fax: 416-759-7402

PARTY WALL DETAIL

Drawing Scale:	N/A
Creation Date:	JULY. 2004
Revision:	—
Drawing ID Number:	AMV-FLR-004

ALL DETAILS SHALL BE CONSTRUCTED IN ACCORDANCE WITH LOCAL BUILDING CODES AND PRACTICES. AMVIC INC. RESERVES THE RIGHT TO CHANGE INFORMATION SHOWN WITHOUT NOTICE.