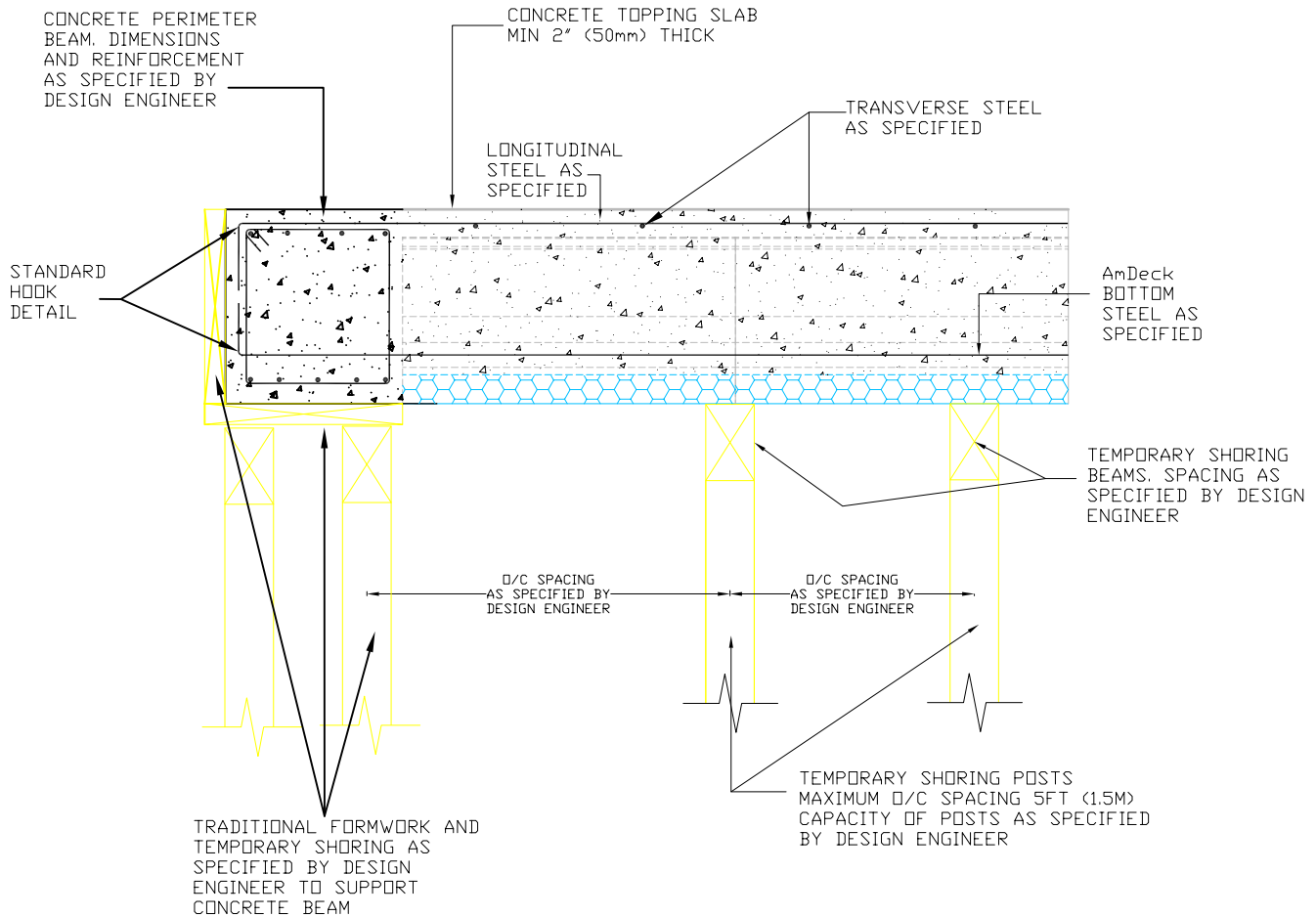


1 - DETAILS IN THIS DRAWING ARE INTENDED AS AN AID FOR THE DESIGN PROFESSIONAL AND SHALL NOT BE USED FOR CONSTRUCTION UNTIL APPROVED BY A LOCAL LICENSED/REGISTERED ENGINEER.

2 - A QUALIFIED PROFESSIONAL SHALL DESIGN TEMPORARY SHORING AS PER LOCAL CODE REQUIREMENTS.
(ACI 347 FOR USA OR CAN/CSA-S269.3 FOR CANADA)



Website: www.amvicsystem.com

AMVIC INC.
501 McNicoll Avenue
Toronto, ON M2H 2E2
Canada
Toll Free: 877-470-9991
Fax: 416-759-7402

AmDeck CONNECTION TO CONCRETE PERIMETER BEAM FLUSH AT BOTTOM (LONGITUDINAL SECTION)

| | |
|--------------------|------------|
| Drawing Scale: | 1" = 1'-0" |
| Creation Date: | MAY. 2006 |
| Item Number: | |
| Drawing ID Number: | AMD-CON-20 |

ALL DETAILS SHALL BE CONSTRUCTED IN ACCORDANCE WITH LOCAL BUILDING CODES AND PRACTICES. AMVIC INC. RESERVES THE RIGHT TO CHANGE INFORMATION SHOWN WITHOUT NOTICE.