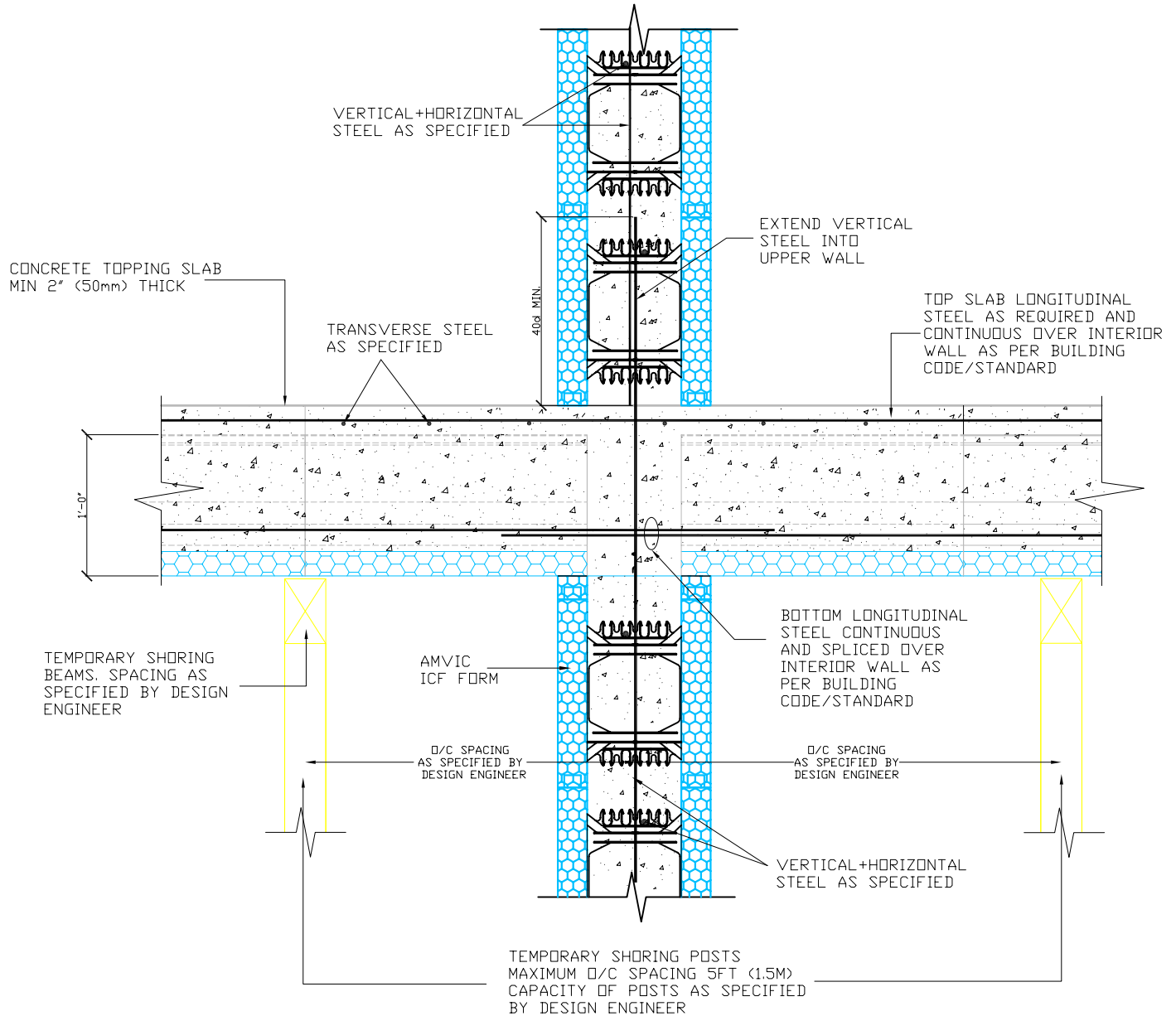


1 - DETAILS IN THIS DRAWING ARE INTENDED AS AN AID FOR THE DESIGN PROFESSIONAL AND SHALL NOT BE USED FOR CONSTRUCTION UNTIL APPROVED BY A LOCAL LICENSED/REGISTERED ENGINEER.

2 - A QUALIFIED PROFESSIONAL SHALL DESIGN TEMPORARY SHORING AS PER LOCAL CODE REQUIREMENTS.  
(ACI 347 FOR USA OR CAN/CSA-S269.3 FOR CANADA)



Website: [www.amvicsystem.com](http://www.amvicsystem.com)

AMVIC INC.  
501 McNicoll Avenue  
Toronto, ON M2H 2E2  
Canada  
Toll Free: 877-470-9991  
Fax: 416-759-7402

AmDeck SUPPORTED ON INTERIOR  
MULTI-STORY ICF WALL  
(LONGITUDINAL SECTION)

Drawing Scale:	1" = 1'-0"
Creation Date:	MAY. 2006
Item Number:	
Drawing ID Number:	AMD-CON-008

ALL DETAILS SHALL BE CONSTRUCTED IN ACCORDANCE WITH LOCAL BUILDING CODES AND PRACTICES. AMVIC INC. RESERVES THE RIGHT TO CHANGE INFORMATION SHOWN WITHOUT NOTICE.